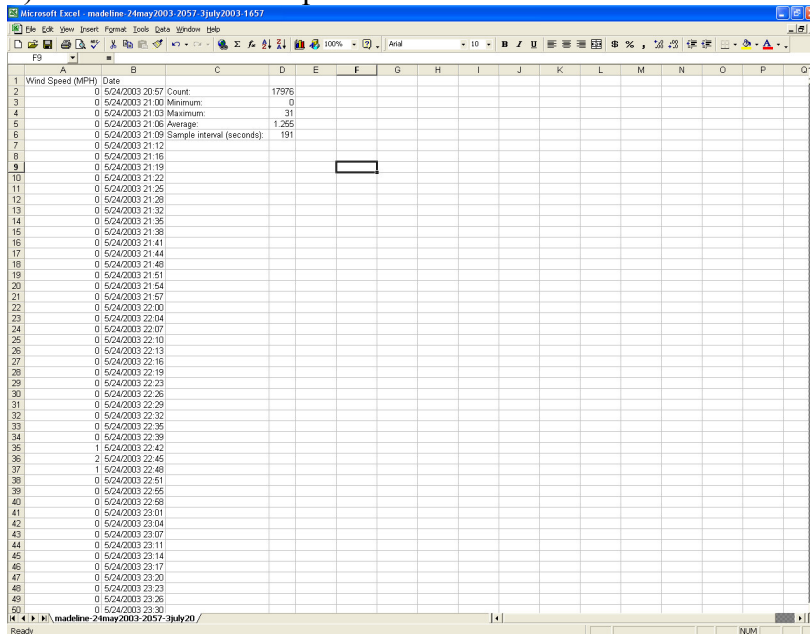


Instructions for Plotting Wind Speed Data Revised 2-July-2005

1) Open data and import into Microsoft Excel as instructed in manual.

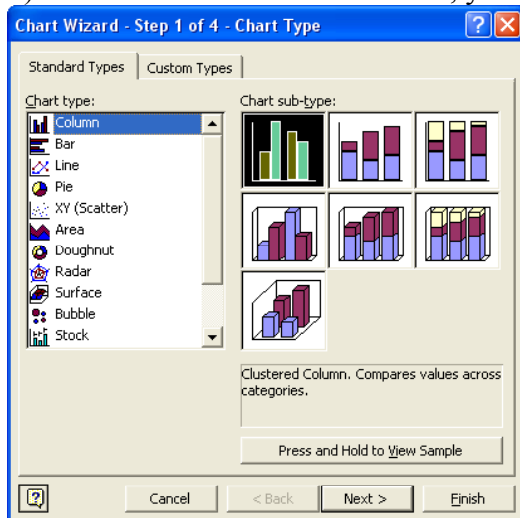
2) You should have a spread sheet like this:



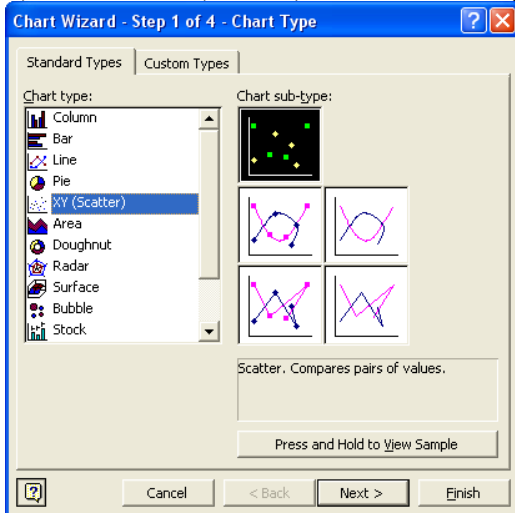
The screenshot shows a Microsoft Excel spreadsheet with the following data:

Wind Speed (MPH)	Date	Count	Minimum	Maximum	Average	Sample interval (seconds)
0	5/24/2003 20:57	17976	0	31	1.255	191
0	5/24/2003 21:00					
0	5/24/2003 21:03					
0	5/24/2003 21:06					
0	5/24/2003 21:09					
0	5/24/2003 21:12					
0	5/24/2003 21:16					
0	5/24/2003 21:19					
0	5/24/2003 21:22					
0	5/24/2003 21:25					
0	5/24/2003 21:28					
0	5/24/2003 21:32					
0	5/24/2003 21:35					
0	5/24/2003 21:38					
0	5/24/2003 21:41					
0	5/24/2003 21:44					
0	5/24/2003 21:48					
0	5/24/2003 21:51					
0	5/24/2003 21:54					
0	5/24/2003 21:57					
0	5/24/2003 22:00					
0	5/24/2003 22:04					
0	5/24/2003 22:07					
0	5/24/2003 22:10					
0	5/24/2003 22:13					
0	5/24/2003 22:16					
0	5/24/2003 22:19					
0	5/24/2003 22:23					
0	5/24/2003 22:26					
0	5/24/2003 22:29					
0	5/24/2003 22:32					
0	5/24/2003 22:35					
0	5/24/2003 22:39					
1	5/24/2003 22:42					
2	5/24/2003 22:45					
1	5/24/2003 22:48					
0	5/24/2003 22:51					
0	5/24/2003 22:55					
0	5/24/2003 22:58					
0	5/24/2003 23:01					
0	5/24/2003 23:04					
0	5/24/2003 23:07					
0	5/24/2003 23:11					
0	5/24/2003 23:14					
0	5/24/2003 23:17					
0	5/24/2003 23:20					
0	5/24/2003 23:23					
0	5/24/2003 23:26					
0	5/24/2003 23:30					

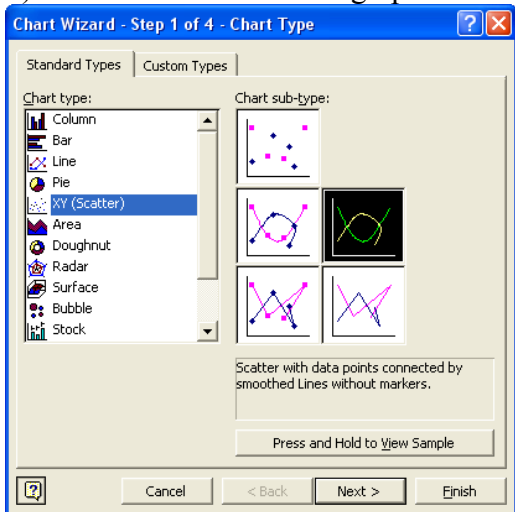
3) Go to “Insert” and then “Chart”, you’ll see a screen like



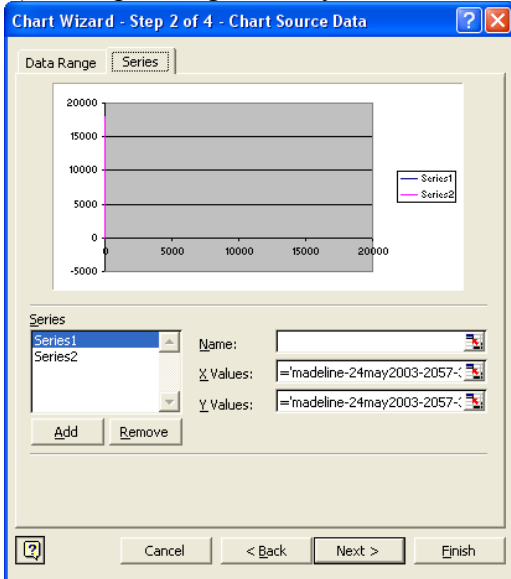
4) Select “XY (Scatter)” from the chart type menu and you will see a screen like this:



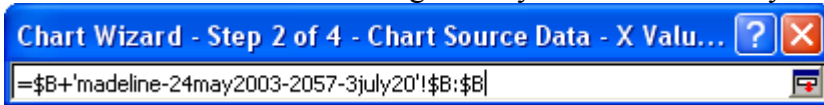
5) Then select the following option:



6) After pressing “next” you’ll need to select your data series, go to the “series” tab across the top:

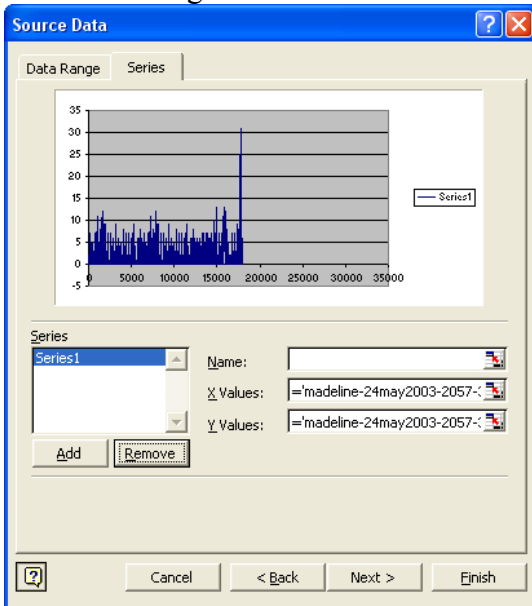


7) The x values will in column b, so you select the button to the right of the x-values box and then you click on the “B” column heading. Once you have done that you will see:



8) For y values select column a using the procedure outlined above.

9) If there are multiple series showing under the series box then “Remove” Series2. Your screen should look something like this:



10) You can then follow the chart wizard and set your titles, labels, and appearance of the chart.